

**ORGANISATION CHART**

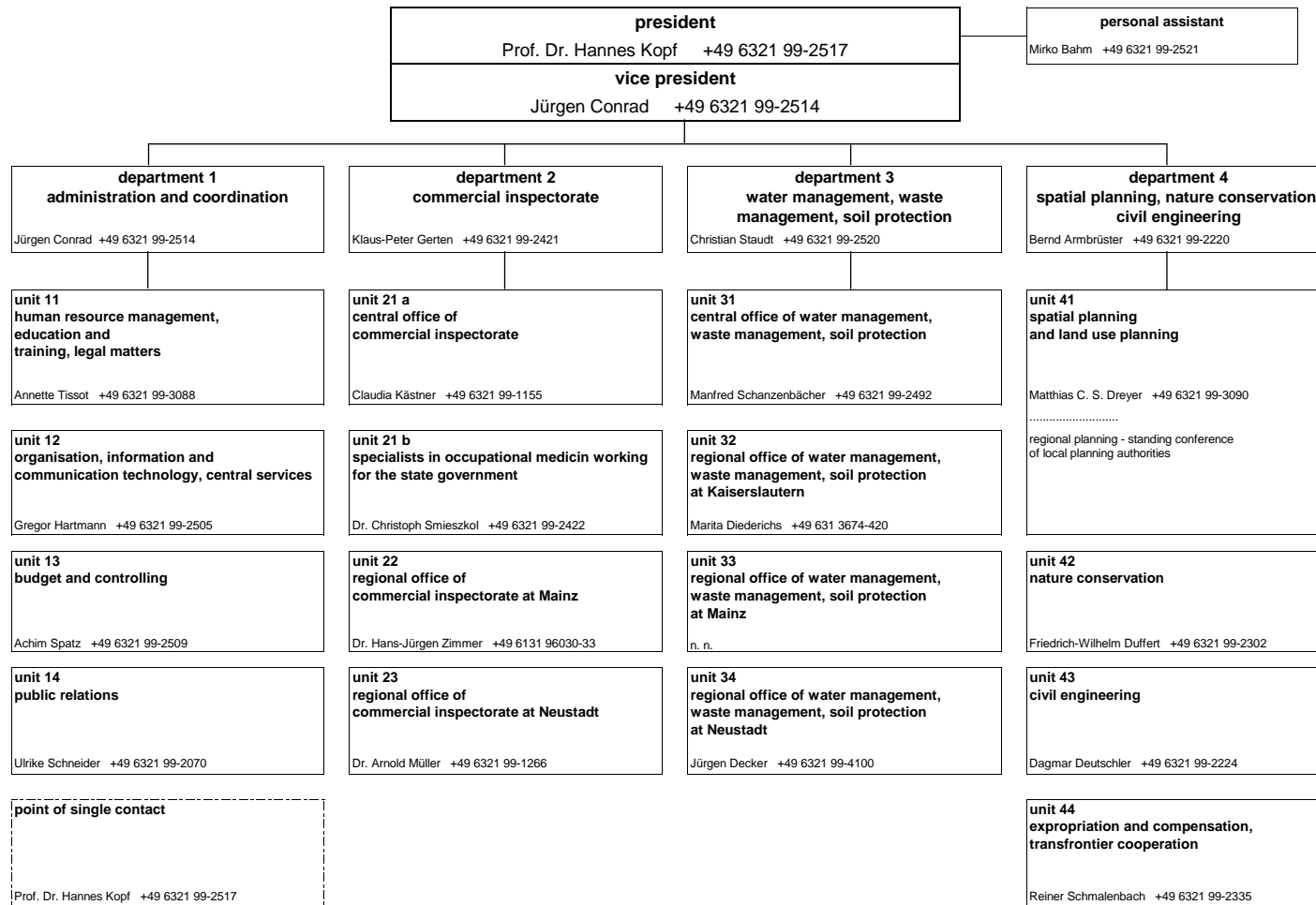
**Struktur- und Genehmigungsdirektion Süd**  
 Friedrich-Ebert-Strasse 14  
 67433 Neustadt an der Weinstrasse  
 Phone: +49 6321 99-0  
 Fax: +49 6321 99-2900  
 poststelle@sgdsued.rlp.de  
 www.sgdsued.rlp.de

Updated: 1 January 2019



**Rheinland-Pfalz**

STRUKTUR- UND  
 GENEHMIGUNGSDIREKTION  
 SÜD



**location**  
**Neustadt an der Weinstrasse:**  
 department 1,  
 department 2 (unit 21 a, unit 21 b),  
 department 3 (unit 31),  
 department 4:  
 Friedrich-Ebert-Strasse 14  
 67433 Neustadt an der Weinstrasse;  
 department 2 (unit 23):  
 Karl-Helfferich-Strasse 2  
 67433 Neustadt an der Weinstrasse;  
 department 3 (unit 34):  
 Karl-Helfferich-Strasse 22  
 67433 Neustadt an der Weinstrasse

**location**  
**Mainz:**  
 department 2 (unit 21 b):  
 Kaiser-Friedrich-Strasse 7  
 55116 Mainz;  
 department 2 (unit 22):  
 Kaiserstrasse 31  
 55116 Mainz;  
 department 3 (unit 33):  
 Kleine Langgasse 3  
 55116 Mainz;  
 unit 41 (standing conference of local planning authorities):  
 Ernst-Ludwig-Strasse 2  
 55116 Mainz

**location**  
**Kaiserslautern:**  
 department 3 (unit 32):  
 Fischerstrasse 12  
 67655 Kaiserslautern;  
 unit 41 (standing conference of local planning authorities):  
 Bahnhofstrasse 1  
 67655 Kaiserslautern

**location**  
**Speyer:**  
 department 3 (unit 34 - dyke maintenance and flood control):  
 Industriestrasse 70  
 67346 Speyer

**location**  
**Budenheim:**  
 department 3 (unit 33 - dyke maintenance):  
 Mainzer Strasse 100  
 55257 Budenheim