

**ORGANISATION CHART**

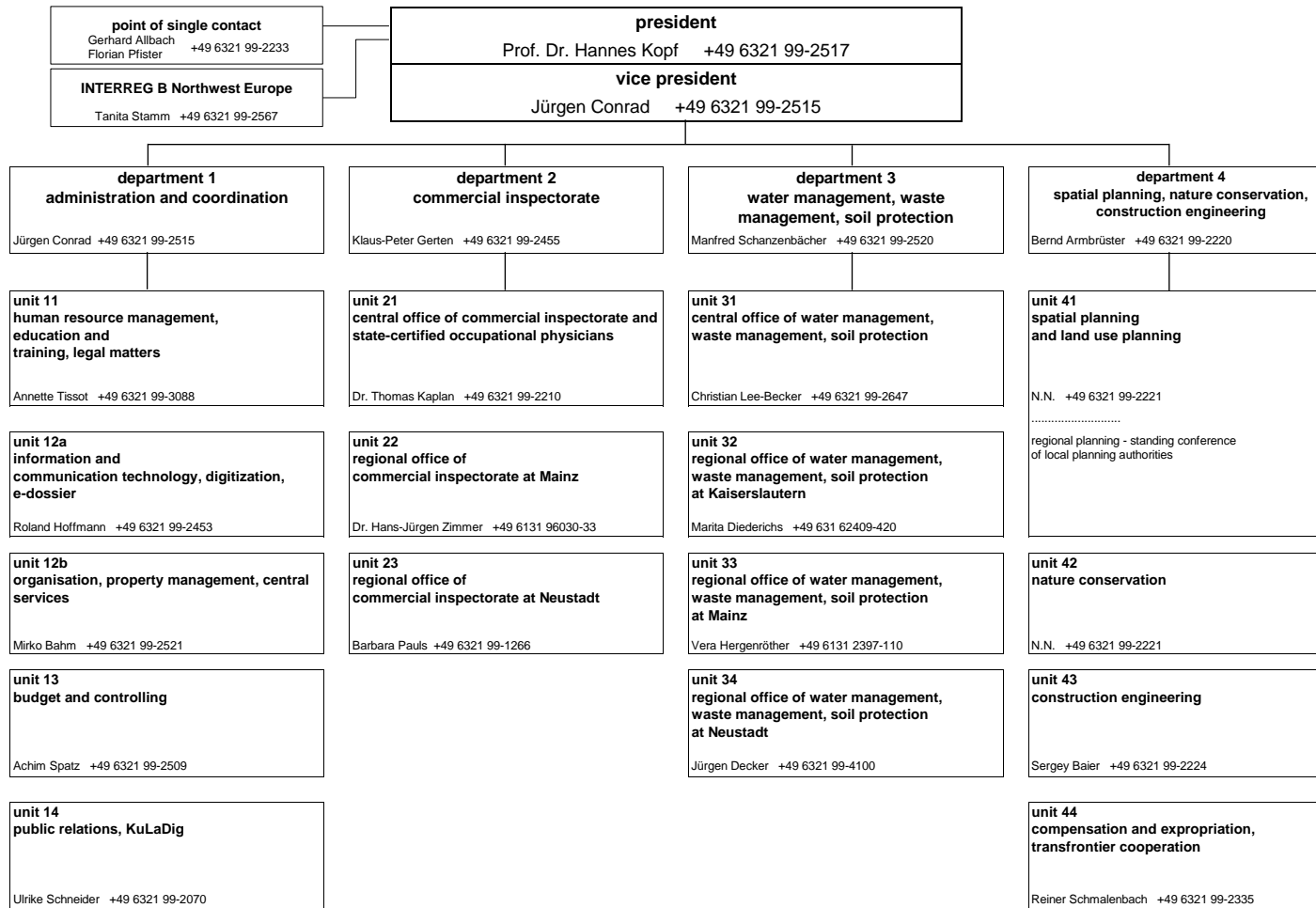
**Struktur- und Genehmigungsdirektion Süd**  
 Friedrich-Ebert-Strasse 14  
 67433 Neustadt an der Weinstrasse  
 Phone: +49 6321 99-0  
 Fax: +49 6321 99-2900  
 poststelle@sgdsued.rlp.de  
 www.sgdsued.rlp.de

Updated: 1 May 2023



**Rheinland-Pfalz**

STRUKTUR- UND  
 GENEHMIGUNGSDIREKTION  
 SÜD



**total employee representation**  
 Thomas Oswald +49 6321 99-2870

**employee representation for the site**

**Neustadt an der Weinstrasse**  
 Volker Jäger +49 6321 99-2506

**Mainz**  
 Benjamin Frank +49 6131 96030-34

**Kaiserslautern**  
 Konstantin Kempf +49 631 62409-487

**Speyer**  
 Ilka Graf +49 6232 6702-13

**total representative for disabled employees**  
 Uwe Högner +49 6321 99-1184

**representative for disabled employees for all sites**  
 Uwe Högner +49 6321 99-1184

**equal opportunity commissioner**  
 Isabell Brandner +49 6321 99-2894

**commissioner for data protection and freedom of information**  
 Martina Hummel +49 6321 99-2513

**IT Security Officer**  
 Udo Schweikert +49 6321 99-2599

**Transparency Officer**  
 Petra Scheib +49 6321 99-2323

**location Neustadt an der Weinstrasse:**  
 department 1,  
 department 2 (unit 21, 23),  
 department 3 (unit 31, 34),  
 department 4:  
 Friedrich-Ebert-Strasse 14  
 67433 Neustadt an der Weinstrasse

**location Mainz:**  
 department 2 (unit 22):  
 Kaiserstrasse 31  
 55116 Mainz;  
 department 3 (unit 33):  
 Kleine Langgasse 3  
 55116 Mainz;  
 unit 41 (standing conference of local planning authorities):  
 Ernst-Ludwig-Strasse 2  
 55116 Mainz

**location Kaiserslautern:**  
 department 3 (unit 32):  
 Fischerstrasse 12  
 67655 Kaiserslautern;  
 unit 41 (standing conference of local planning authorities):  
 Bahnhofstrasse 1  
 67655 Kaiserslautern

**location Speyer:**  
 department 3 (unit 34 - dyke maintenance and flood control):  
 Industriestrasse 70  
 67346 Speyer

**location Budenheim:**  
 department 3 (unit 33 - dyke maintenance):  
 Mainzer Strasse 100  
 55257 Budenheim